

What Parents & Educators Need to Know about ADRENALINE DEVICES

Adrenaline is for the immediate treatment of anaphylaxis, which is a serious allergic reaction. If in doubt, use an adrenaline pen. Delaying treatment for anaphylaxis causes more harm than giving adrenaline when it's not needed. Adrenaline is a safe substance that is naturally produced in our bodies. Adrenaline devices are single use, and it's important always to carry two rather than just one.

WHEN TO USE

AIRWAY: Symptoms include swelling in the throat, tongue or upper airways; tightening of the throat; a hoarse voice; and difficulty swallowing.



BREATHING: Symptoms include persistent cough; sudden onset of wheezing; breathing difficulty; and noisy breathing.



CIRCULATION: Symptoms include pale and clammy skin; dizziness; feeling faint; sudden sleepiness; tiredness; confusion; and loss of consciousness.



How to use an EpiPen adrenaline auto-injector

1. Hold the AAI in your dominant hand and tuck your thumb out of the way.



2. Remove the blue safety cap and have the orange needle sheath pointing towards the patient's thigh.



3. Hold the AAI approximately 10cm away from their outer upper thigh.



4. Jab the EpiPen firmly into the outer thigh and press until it clicks.



5. Count to 3 and then release.

1,2,3

How to use a Jext adrenaline auto-injector

1. Hold the AAI in your dominant hand and tuck your thumb out of the way.



2. Remove the yellow safety cap and have the black needle sheath pointing towards the patient's thigh.



3. Place the black needle sheath on their outer upper thigh and press until it clicks.



4. Count to 10, then release and rub the injected area.

1,2...10

How to use EURNeffy nasal adrenaline

1. Hold the device with the first and middle fingers either side of the nozzle and the thumb on the plunger.



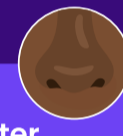
2. Insert the nozzle fully into one nostril until your fingers touch the outside of your nose.



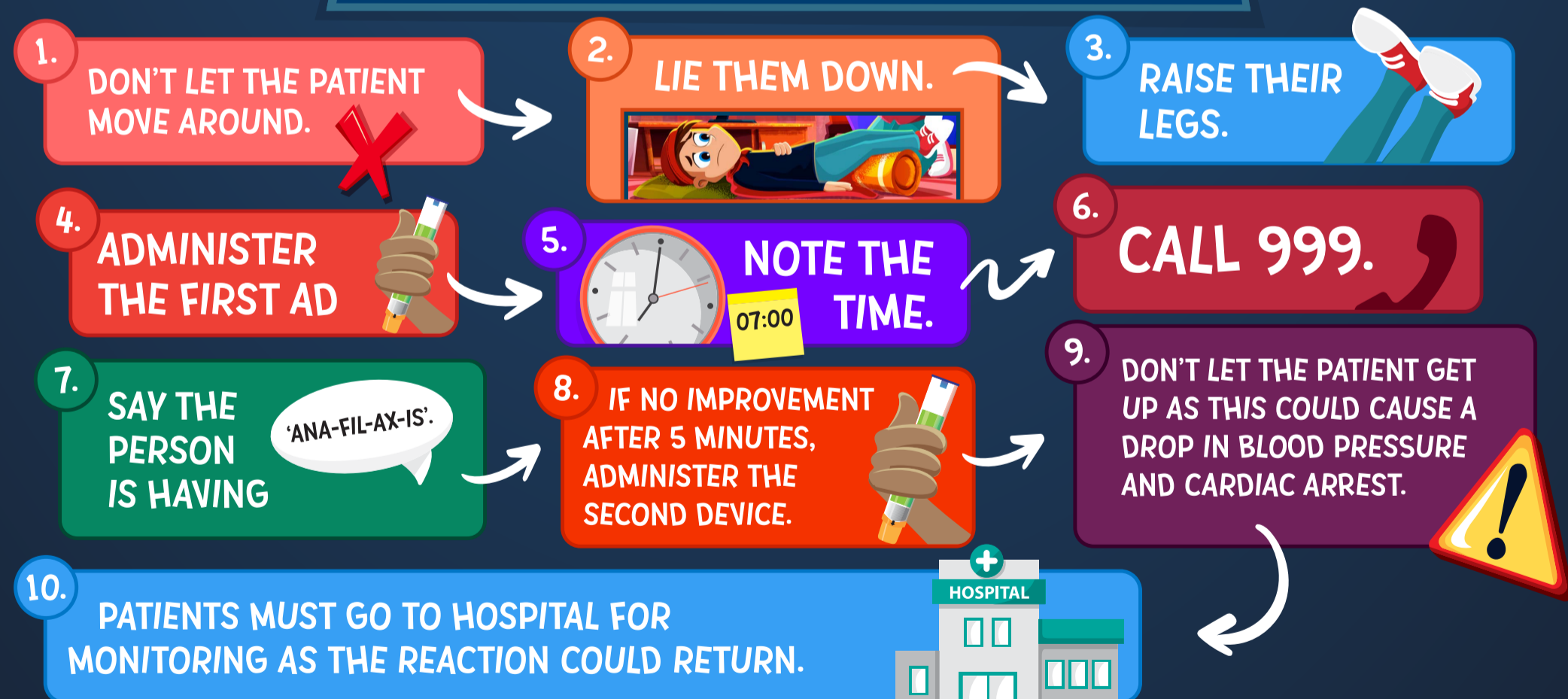
3. Press the plunger up firmly until it snaps and releases the medication.



4. **DO NOT SNIFF:** Try not to sniff after administering the spray



ANAPHYLAXIS TREATMENT FLOW CHART:



Meet Our Expert

Anaphylaxis UK is the only UK-wide charity operating solely for the growing numbers of people at risk of serious allergic reactions and anaphylaxis. While there's no treatment or cure for anaphylaxis, we believe that by providing information, training and support, there's a brighter future for people living with serious allergies.



The National College®