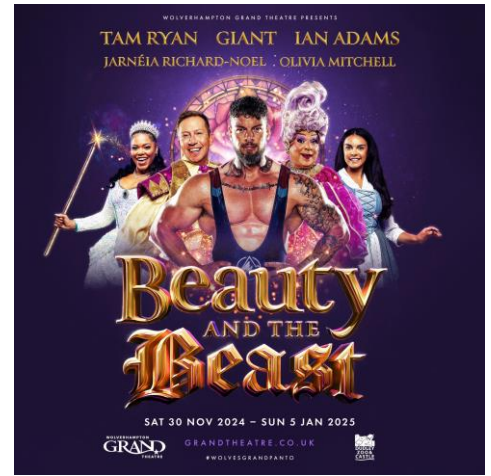




Meeting Individual Needs



8 November 2024

Dear Parents/Carers

Upper Key Stage 2 Pantomime Trip

On **Friday 13th December**, Classes 6, 11, 12 & 14 will be visiting The Grand Theatre in Wolverhampton to watch 'Beauty and the Beast'.

The show starts at 11.00am, which means we will be returning to school at approximately 2.30pm – 3.00pm. ***As this is after our usual 2.00pm Friday finish time, can we please ask you to make arrangements to ensure that your son/daughter can be collected from school at this time by yourself or another recognised family member and transported safely home. If there is any change to the return time, due to traffic etc, we will notify you as soon as we can.***

All children will need a packed lunch on this day. Please let us know if you would like a packed lunch to be ordered from the school kitchen or if you would prefer to send one in from home. (Children eligible for free school meals will not have to pay, all other packed lunches ordered will cost £2.60). School packed lunches include a choice of sandwich, a pot of salad, a piece of fruit, cheese & crackers, a pudding (e.g. a biscuit/cake) and a bottle of water.

Children will need to wear their usual school uniform please.

We will be travelling to and from the theatre in two coaches. The cost of transport and tickets works out to £26.00 per child, however school is subsidising the cost of this visit by 50% to make it more affordable to Parents/Carers, taking the cost of the visit down to **£13.00 per child**.

Can we please ask for all payments to be made via your child's ParentPay account as soon as possible.

We are really looking forward to this fun and festive end of term treat!

Thank you.

Yours sincerely

Mr Bradney
Class 14 Teacher / Trip Organiser



Meeting Individual Needs

‘Beauty and the Beast’ Pantomime Trip

Classes 6, 11, 12 & 14

The Grand Theatre Wolverhampton

Friday 13th December 2024

Child’s Name:

Class:

I give permission for my child to take part in the above trip.

LUNCH

Please order my child a packed lunch from school kitchen (select a sandwich choice below):

- Cheese spread Cheese slice Tuna Ham

(Children eligible for free school meals will not have to pay, all other packed lunches ordered will cost £2.60).

My child will bring in a packed lunch from home.

TRANSPORT HOME

My child will be picked up from Haughton School on this day at approximately 2.30pm – 3.00pm by:

Name:

Relationship to Pupil:

Contact Tel No:

Signed: **Parent/Carer** **Date:**